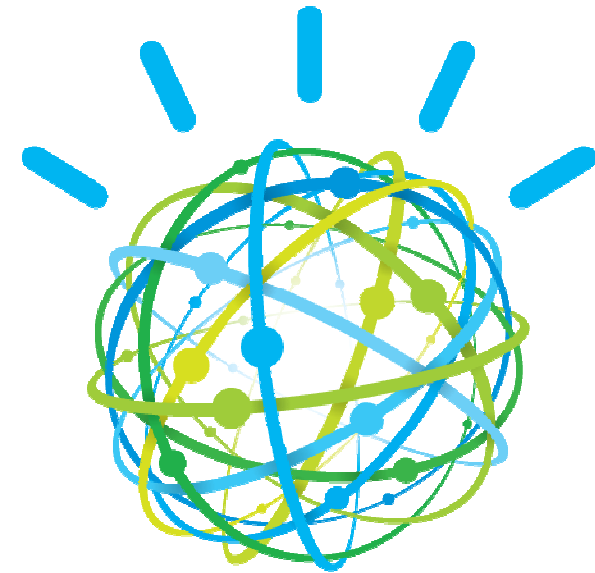


# Making Cognitive Computing A Reality:

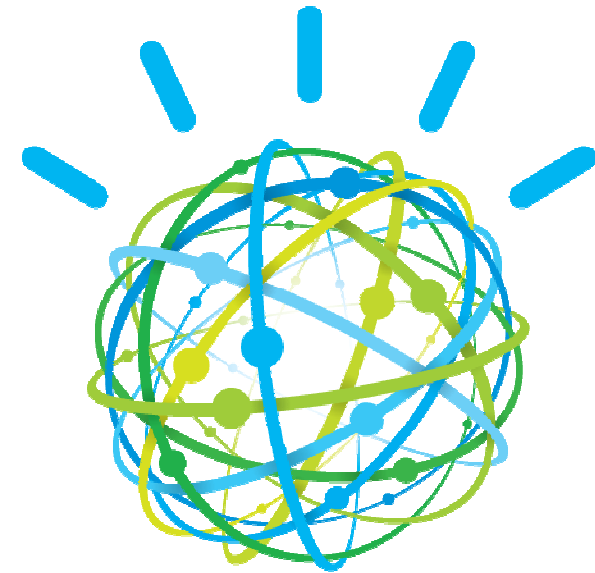
*Watson's road to real world  
applications.*



D.J. McCloskey

IBM Watson Group

# What is Watson?



## A Grand Challenge Opportunity



- **Drive Important Scientific Advances**

- Envision new ways for computers to impact society & science

- **Be Relevant to IBM Customers**

- Enable better, faster decision making over unstructured and structured content
- *Business Intelligence, Knowledge Discovery and Management, Government, Compliance, Publishing, Legal, Healthcare, Product Support, etc.*

- **Capture the Broader Imagination**

- The Next *Deep Blue*

On February 14, 2011, IBM Watson changed history . . .



Word spread virally of the victory with Twitter reaching 11.7M, 30,121 blog mentions, and 15,025 forum posts

The Jeopardy! Challenge: *A compelling and notable way to drive and measure the technology of automatic Question Answering along 5 Key Dimensions*

Broad/Open Domain

Complex Language

High Precision

Accurate Confidence

High Speed

**\$200**

If you're standing, it's the direction you should look to check out the wainscoting.

What is down?

**\$1000**

The first person mentioned by name in 'The Man in the Iron Mask' is this hero of a previous book by the same author.

Who is D'Artagnan?

**\$600**

In cell division, mitosis splits the nucleus & cytokinesis splits this liquid *cushioning* the nucleus

What is cytoplasm?

**\$2000**

Of the 4 countries in the world that the U.S. does not have diplomatic relations with, the one that's farthest north

What is North Korea?

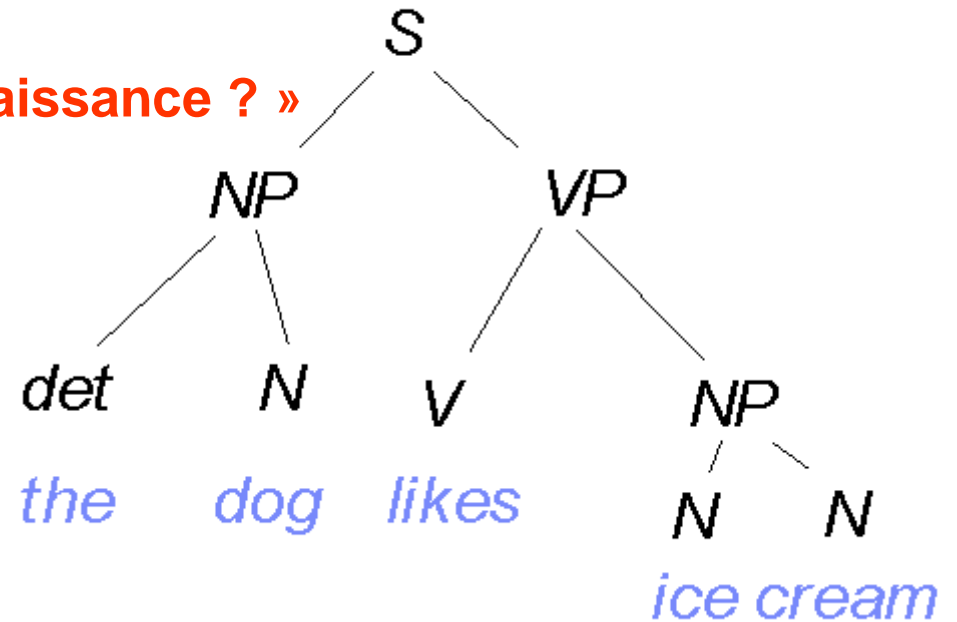
# Humans and our language



Je suis le guide.

L'amour aveugle le guide.

« Le président a-t-il toujours sa connaissance ? »



The boy saw the girl with the telescope.

Queen Mary Has Bottom Scraped

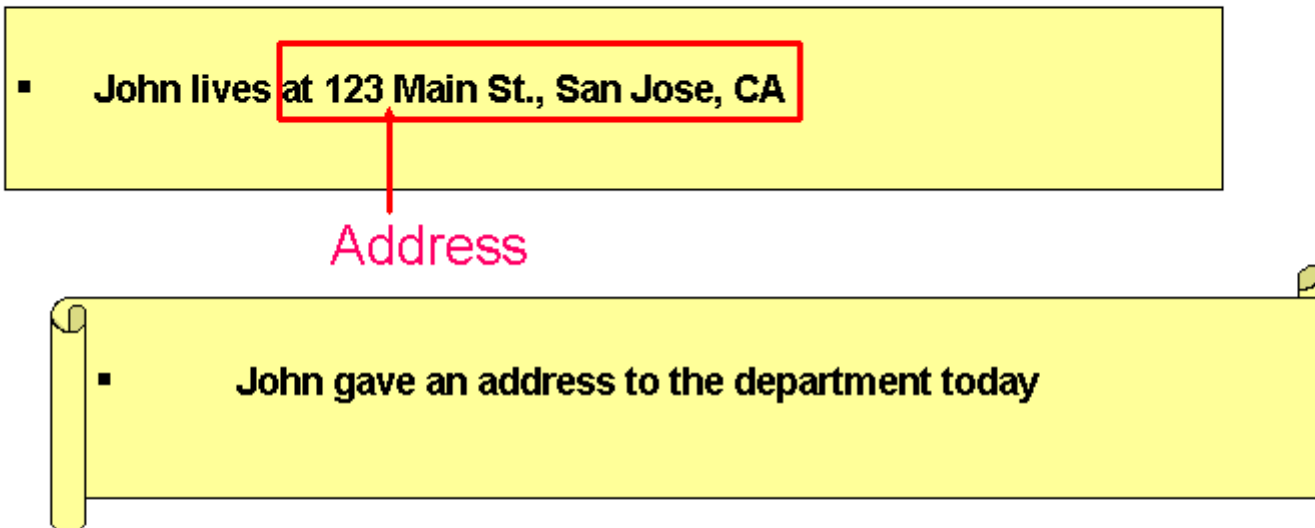
HOW WILL LOSS OF JOBS AFFECT APPLE?

Money burns up vs. houses burn down

Noses that run and feet that smell...

Iraqi Head Seeks Arms

## The importance of semantic information



- John lives at 123 Main St., San Jose, CA

Address

- John gave an address to the department today

Query: *john's address*

Today, search engines will return the second document, not the first

## Unstructured Data

	Structured Data	Unstructured Data								
Welch ran this?	<table border="1"><thead><tr><th>Person</th><th>Organization</th></tr></thead><tbody><tr><td>L. Gerstner</td><td>IBM</td></tr><tr><td>J. Welch</td><td>GE</td></tr><tr><td>W. Gates</td><td>Microsoft</td></tr></tbody></table>	Person	Organization	L. Gerstner	IBM	J. Welch	GE	W. Gates	Microsoft	<p><i>“If leadership is an art then surely Jack Welch has proved himself a master painter during his tenure at GE.”</i></p>
Person	Organization									
L. Gerstner	IBM									
J. Welch	GE									
W. Gates	Microsoft									

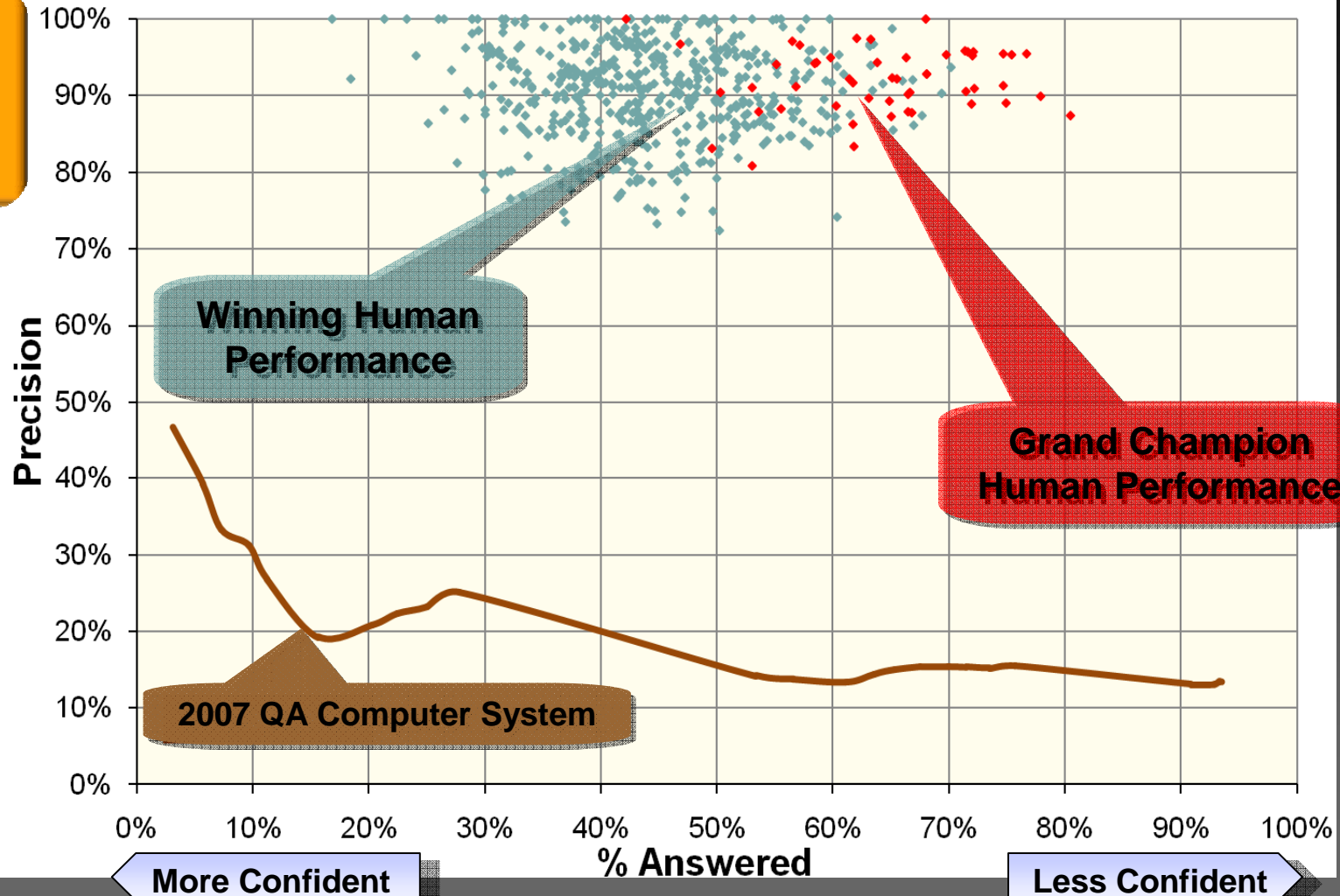


## Competing against the Top Human Players

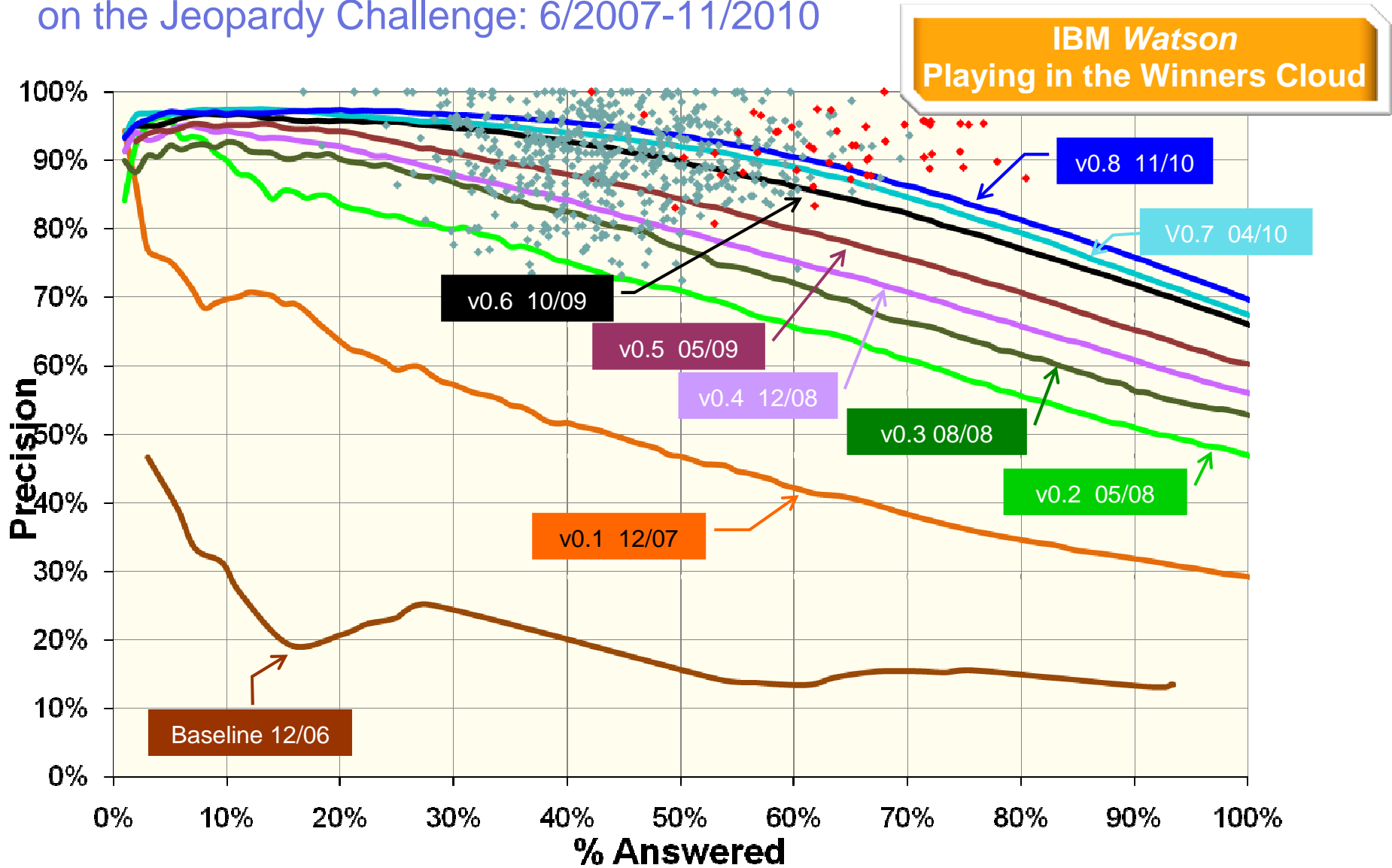
Our Analysis exposes *"The Winner's Cloud"*

Each dot – historical human Jeopardy! game

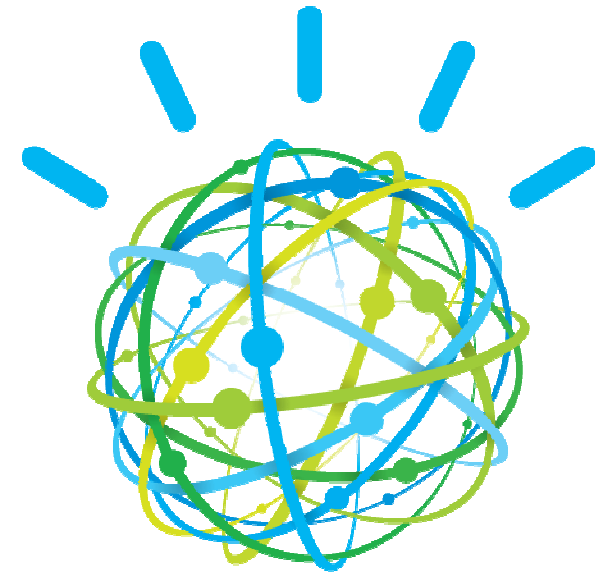
Top human players are remarkably good.



# DeepQA: Incremental Progress in Answering Precision on the Jeopardy Challenge: 6/2007-11/2010



# How Watson Works

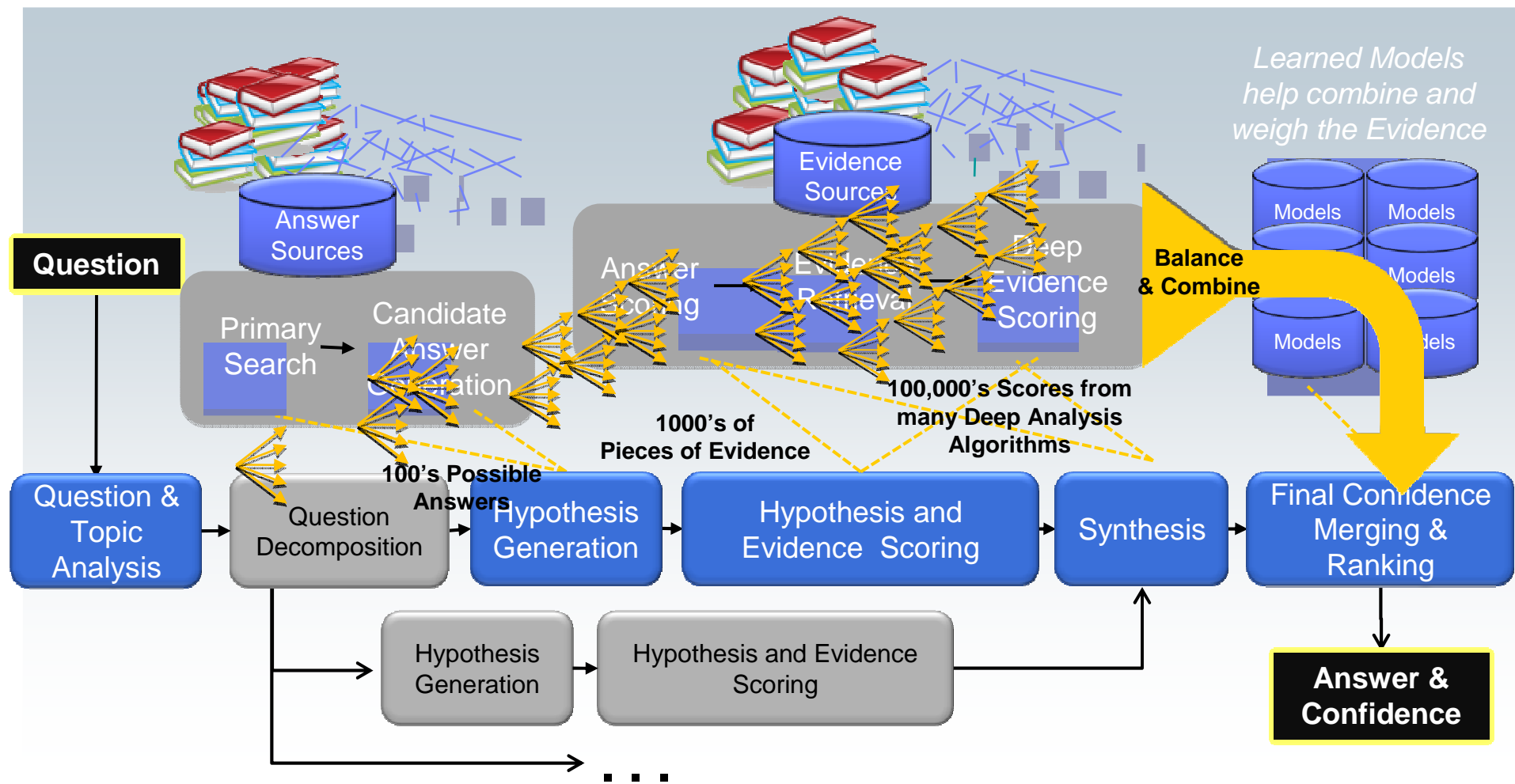


# DeepQA: The Technology Behind Watson



## Massively Parallel Probabilistic Evidence-Based Architecture

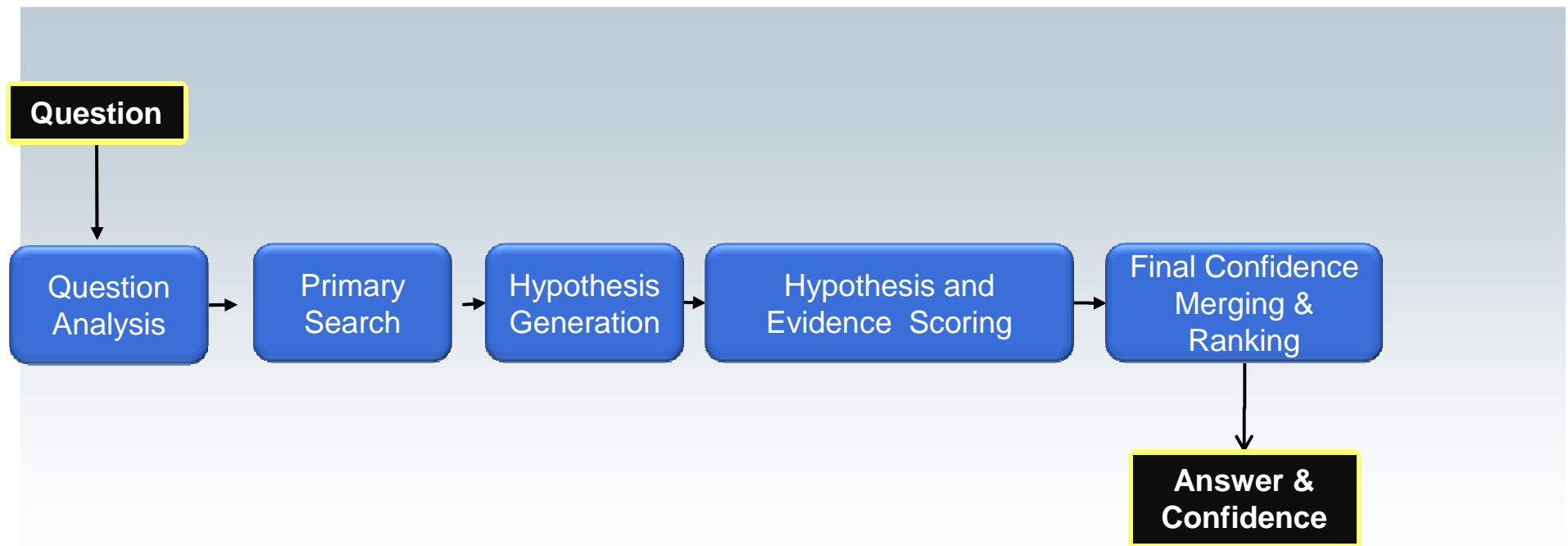
DeepQA generates and scores many hypotheses using an extensible collection of **Natural Language Processing, Machine Learning and Reasoning Algorithms**. These gather and weigh evidence over both unstructured and structured content to determine the answer with the best confidence.



*“Minimal” Deep QA Pipeline*

**Category: MICHIGAN MANIA**

**Clue: In 1894 C.W. Post created his warm cereal drink Postum in this Michigan city**



*"Minimal" Deep QA Pipeline*

**Category: MICHIGAN MANIA**

**Clue: In 1894 C.W. Post created his warm cereal drink Postum in this Michigan city**

Question



Question  
Analysis

# Step 1: Question Analysis

Category: MICHIGAN MANIA

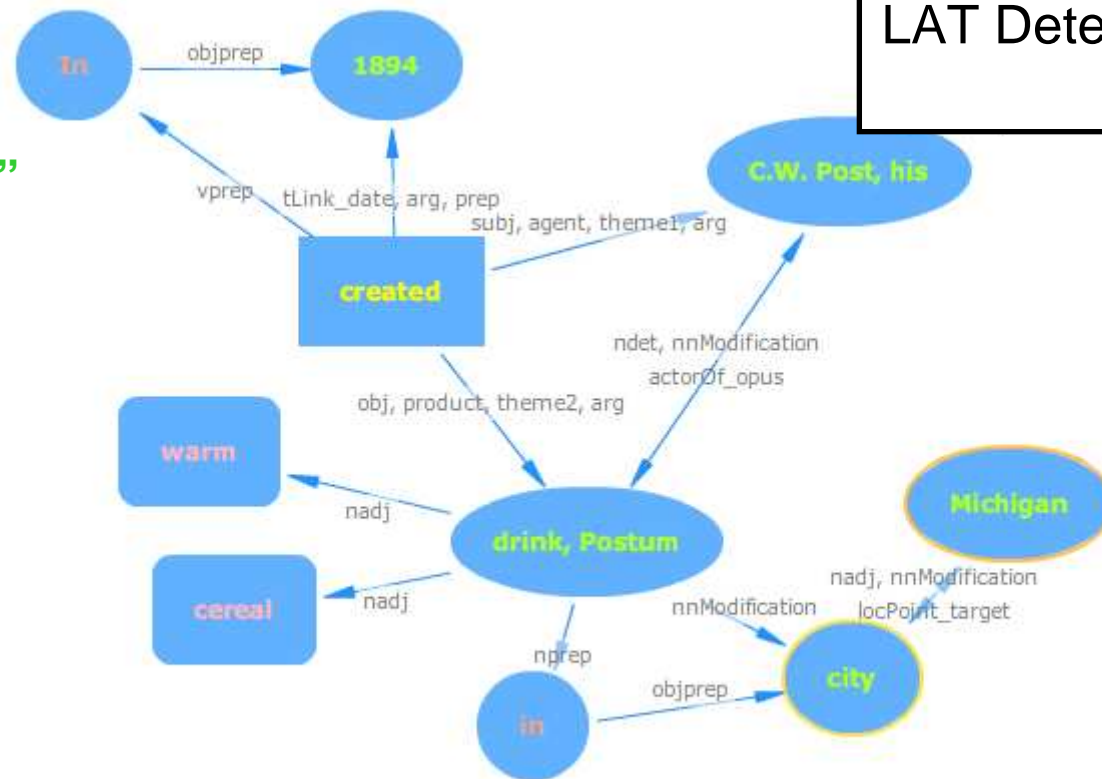
Clue: In 1894 C.W. Post created his warm cereal drink Postum in this Michigan city

Parsing  
LAT Detection

**Focus:** "this Michigan city"  
**LAT:** Michigan city

Keywords:

1894  
C.W. Post  
created  
warm  
cereal  
drink,  
Postum  
Michigan  
City



*“Minimal” Deep QA Pipeline*

**Category: MICHIGAN MANIA**

**Clue: In 1894 C.W. Post created his warm cereal drink Postum in this Michigan city**





# Step 2: Primary Search

The keywords (1894, C.W. Post, created, warm, cereal, drink, Postum, Michigan, city) are used to search over millions of documents to find relevant hits. 55 documents are found, and 30 passages are found.

Indri Passage Search		Passage Search Results	
Lucene Passage Search		Rank	Passage
		0	C.W. Post came to the Battle Creek sanitarium to cure his upset stomach. He later created Postum, a cereal-based coffee substitute
		1	The caffeine-free beverage mix was created by The Postum Cereal Company founder C. W. Post in 1895 and produced and marketed by Postum Cereal Company as a healthful alternative to coffee
		2	1895: In Battle Creek, Michigan, C.W. Post made the first POSTUM , a cereal beverage. Post created GRAPE-NUTS cereal in 1897, and POST TOASTIES corn flakes in 1908
		3	1854 C. W. Post (Charles William) was born. He founded the Postum Cereal Co. in 1895 (renamed General Foods Corp. in 1922) to manufacture Postum cereal beverage
		4	The company was incorporated in 1922, having developed from the earlier Postum Cereal Co. Ltd., founded by C.W. Post (1854-1914) in 1895 in Battle Creek, Mich. After a number of experiments, Post marketed his first product-the cereal beverage called Postum-in 1895
		5	...

Document Search Results	
Rank	Title
0	General Foods
1	Battle Creek
2	Post Foods
3	Will Keith Kellogg
4	Breakfast Cereal
5	John Harvey Kellogg
6	C. W. Post
7	Kellogg Company
8	Postum
	...

### General Foods

From Wikipedia, the free encyclopedia

**General Foods Corporation** was a company whose direct predecessor was the USA by Charles William Post as the Postum Cereal Company. General Foods was adopted in 1929, after several corporate acquisitions. General Foods was acquired by Philip Morris Companies (now Altria Group), the largest non-oil acquisition to that time. In December 2008, Kraft, Inc., and in 1990 combined the two food companies as Kraft Foods. "General Foods" was dropped from the corporate name in 1995 as a result of a brand name for a flavored coffee-based beverage, *General Foods*.

**Contents** (hide)

- History
- Major acquisitions
  - 1 Purchase of Birdseye
- See also
- Notes and references
- Timeline of selected later events

### Will Keith Kellogg

**Britannica Concise Encyclopedia:** Will Keith Kellogg (born April 7, 1860, Battle Creek, Mich., U.S. — died Oct. 20, 1951, Battle Creek, Mich., U.S.) American inventor and philanthropist. After working with his brother John Harvey Kellogg, he founded (1906) the W.K. Kellogg Co. to manufacture cereals. In his early years, it soon became a leading U.S. producer of cereals. In the 20th century, its annual sales exceeded \$9 billion. The W.K. Kellogg Co. is a philanthropic institutions.

For more information on *Will Keith Kellogg*, visit the [Britannica Concise Encyclopedia](#).

[Home](#) > [Library](#) > [Miscellaneous](#) > [Britannica Concise Encyclopedia](#)

### Post Foods

From Wikipedia, the free encyclopedia

**Post Foods, LLC**, also known as **Post Cereals** (formerly **Postum Cereals**) was founded by C.W. Post. It began in 1895 with the first Postum, a "cereal beverage", developed by Post in Battle Creek, Michigan. The first cereal, Grape-Nuts, was developed in 1897. Post has its headquarters in the Bank of America Plaza in Downtown St. Louis, Missouri.<sup>[2]</sup>

The Postum Cereals company, after acquiring Jell-O gelatin in 1925, Baker's chocolate in 1927, Maxwell House coffee in 1928, and other food brands, changed its name to General Foods Corporation in 1929. General Foods was acquired by Philip Morris Companies in 1985.

In 1989, Philip Morris merged General Foods with Kraft Foods, which it had acquired in 1987 to form the Kraft General Foods division. The cereal brands of Nabisco were acquired in 1993. In 1995, Kraft General Foods was reorganized and renamed Kraft Foods.

On November 15, 2007, Kraft announced that it would spin off Post Cereals and merge that business with Ralcorp Holdings.<sup>[3]</sup> That merger was completed August 4, 2008.<sup>[4]</sup> The official name of the company became Post Foods, LLC.

**Contents** (hide)

- Cereal brands – present cereals
- Discontinued cereals
- External links
- References

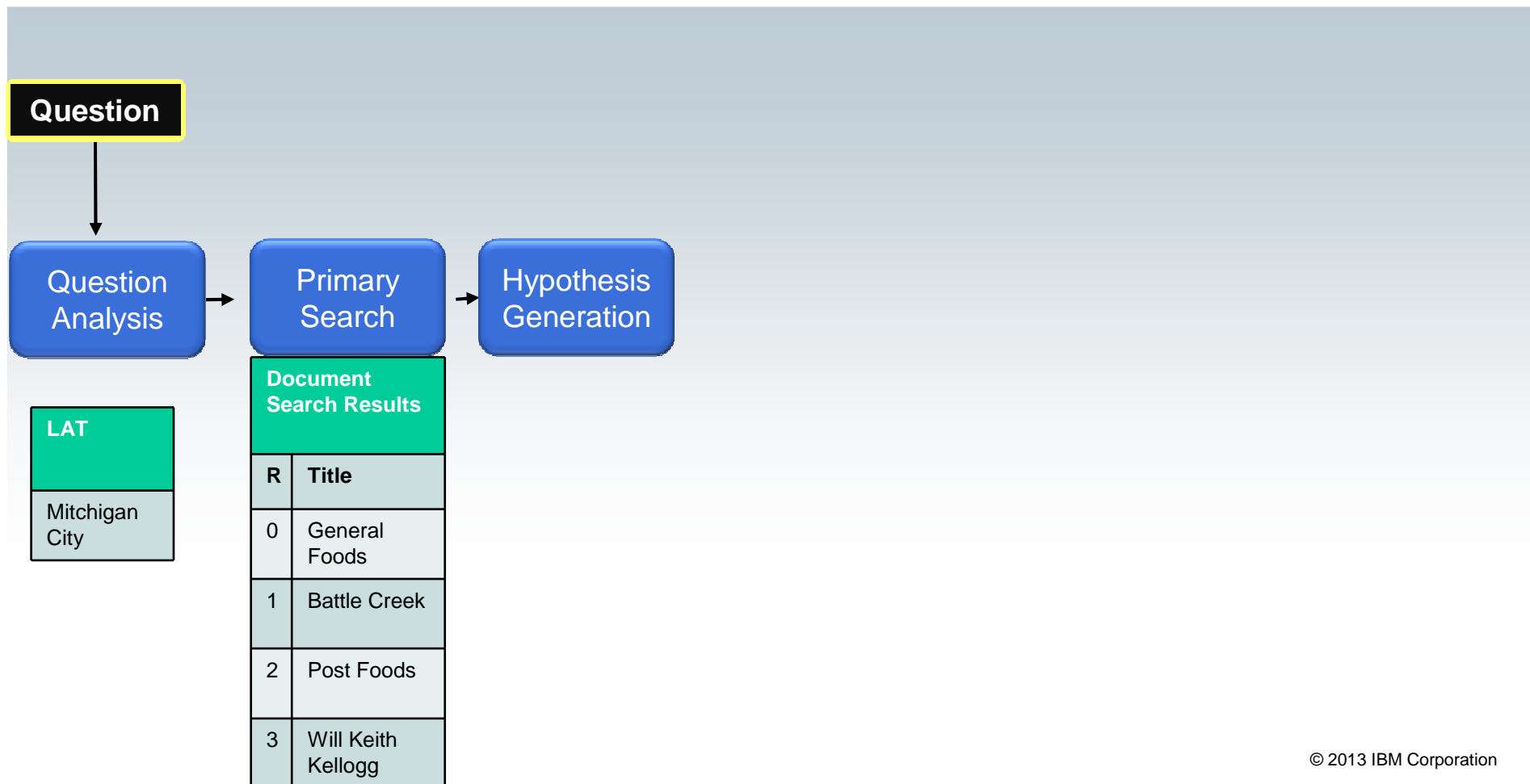
**Cereal brands – present cereals**

- 100% Bran - Currently Only Available in Canada
- Honey Bunches of Oats - with Real Strawberries
- Selects Cranberry
- Selects Maple Dessert

*“Minimal” Deep QA Pipeline*

**Category: MICHIGAN MANIA**

**Clue: In 1894 C.W. Post created his warm cereal drink Postum in this Michigan city**



# Step 3: Hypothesis Generation

Category: **MICHIGAN MANIA**

Clue: **In 1894 C.W. Post created his warm cereal drink Postum in this Michigan city**

Candidate Answers (possible answers to the question) are identified in the search results. They are found by looking at document titles (including a variety of title variants and expansions) and possible answers in the text of the documents and passages, such as *named entities*, noun phrases, anchor text, dates, etc. The Candidate Answers are get their first evidence feature scores from their corresponding document search rank and passage search rank.

**General Foods**

General Foods Corporation was a company whose direct predecessor was established in the USA by Charles William Post as the Postum Cereal Company in 1895. The name General Foods was adopted in 1929, after several corporate acquisitions. In November, 1985 General Foods was acquired by Philip Morris Companies (now Altria Group, Inc.) for \$5.6 billion, the largest non-oil acquisition to that time. In December, 1988 Philip Morris acquired Kraft, Inc., and in 1990 combined the two food companies as Kraft General Foods (KGF). "General Foods" was dropped from the corporate name in 1995 and now exists only as part of a brand name for a flavored coffee-based beverage, General Foods International.

- Contents [hide]
- 1 History
- 2 Major acquisitions
  - 2.1 Purchase of Birdseye
- 3 See also
- 4 Notes and references
- 5 Timeline of selected later events

**History**

<sup>[1]</sup> C.W. Post established his company in **Battle Creek, Michigan**, in 1891, when he was a patient at an **hospice sanitarium** operated by Dr. Kellogg.<sup>[2]</sup> Dr. Kellogg, with his brother W.K. Kellogg, had developed that as part of their patients' diet. Post's first product, introduced in however, but a roasted, cereal-based beverage, **Postum**. Having deviled coffee during his time in the sanitarium, Post positioned Postum as a

**Post Foods**

Post Foods, LLC, also known as **Post Cereals** (formerly **Postum Cereals**) was founded by C.W. Post. It began in 1895 with the first Postum, a "cereal beverage", developed by Dr. Kellogg in **Battle Creek, Michigan**. The first cereal, Grape-Nuts, was developed in 1897. Post has headquarters in the Bank of America Plaza in Downtown St. Louis, Missouri.<sup>[2]</sup>

The Postum Cereals company, after acquiring Jell-O gelatin in 1925, Baker's chocolate in 1927, Maxwell House coffee in 1928, and other food brands, changed its name to General Foods Corporation in 1929. General Foods was acquired by Philip Morris Companies in 1985.

In 1989, Philip Morris merged General Foods with Kraft Foods, which it had acquired in 1985, to form the Kraft General Foods division. The cereal brands of Nabisco were acquired in 1993. In 1995, Kraft General Foods was reorganized and renamed Kraft Foods.

On November 15, 2007, Kraft announced that it would spin off Post Cereals and merge the business with Ralcorp Holdings.<sup>[3]</sup> That merger was completed August 4, 2008.<sup>[4]</sup> The official name of the company became Post Foods, LLC.

- Contents [hide]
  - 1 Cereal brands – present cereals
  - 2 Discontinued cereals
  - 3 External links
  - 4 References
- Cereal brands – present cereals**
- 100% Bran - Currently Only Available in Canada
  - Honey Bunches of Oats - with Real Strawberries

**Will Keith Kellogg**

Britannica Concise Encyclopedia: Will Keith Kellogg

Home > Library > Miscellaneous > Britannica Concise Encyclopedia

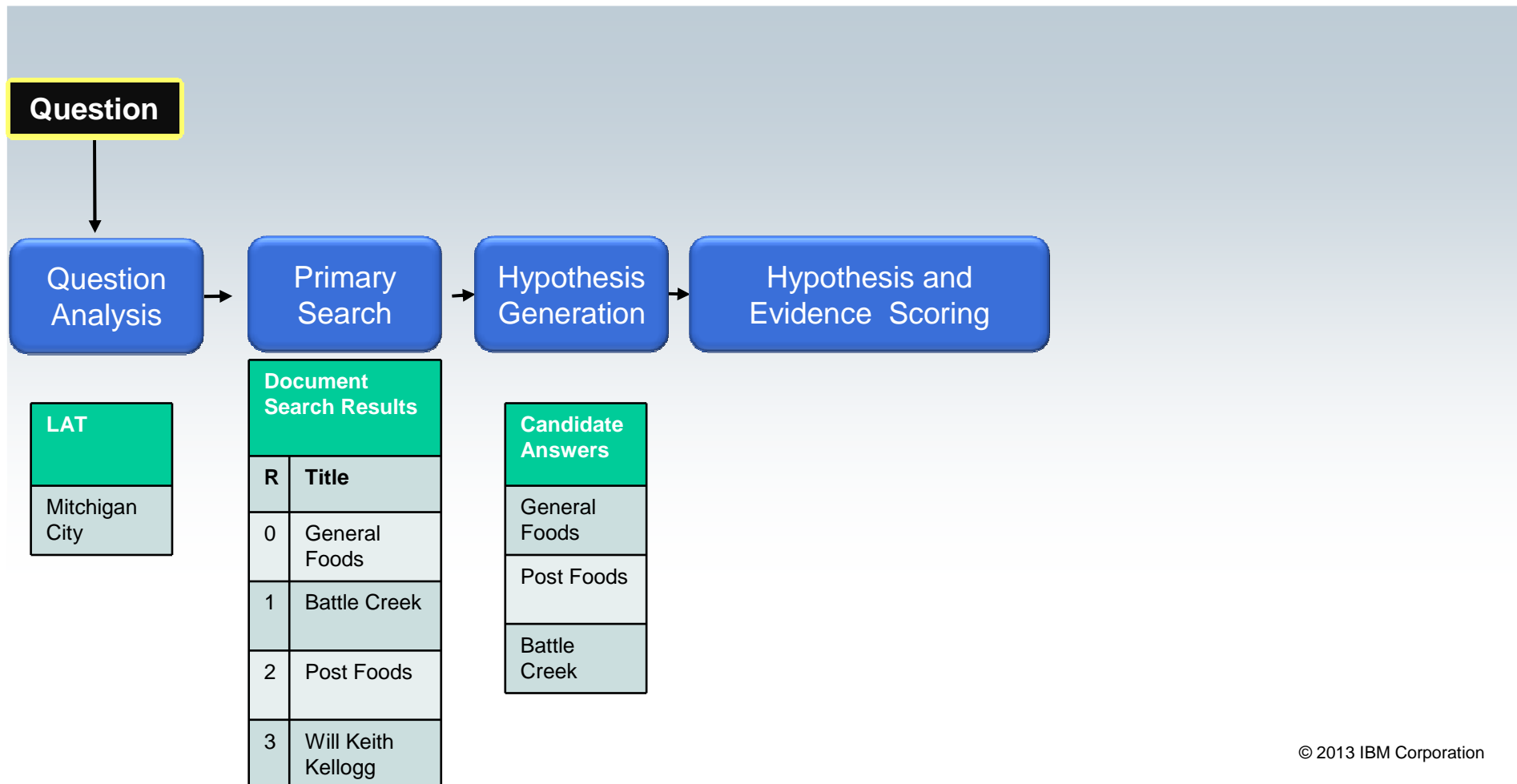
Candidate Answers	Evidence Feature Scores									
	Doc Rank	Pass Rank								
General Foods	0	1								
Post Foods	2	1								
Battle Creek	1	2								
Will Keith Kellogg	3									
Grand Rapids										
1895		0								

ration

*“Minimal” Deep QA Pipeline*

**Category: MICHIGAN MANIA**

**Clue: In 1894 C.W. Post created his warm cereal drink Postum in this Michigan city**



# Step 4A: Hypothesis Scoring (Answer Scoring Features)

**Category: MICHIGAN MANIA**

**Clue: In 1894 C.W. Post created his warm cereal drink Postum in this Michigan city**

Other Answer Scorers can be applied depending on different relations or constraints detected in the question. For example, this question focus with modifiers is “Michigan city.” Watson can detect this as a geospatial relation that indicates the correct answer must be a city spatially located within the sate of Michigan.

*Tycor*  
*Temporal*  
*Spatial*  
*Popularity*

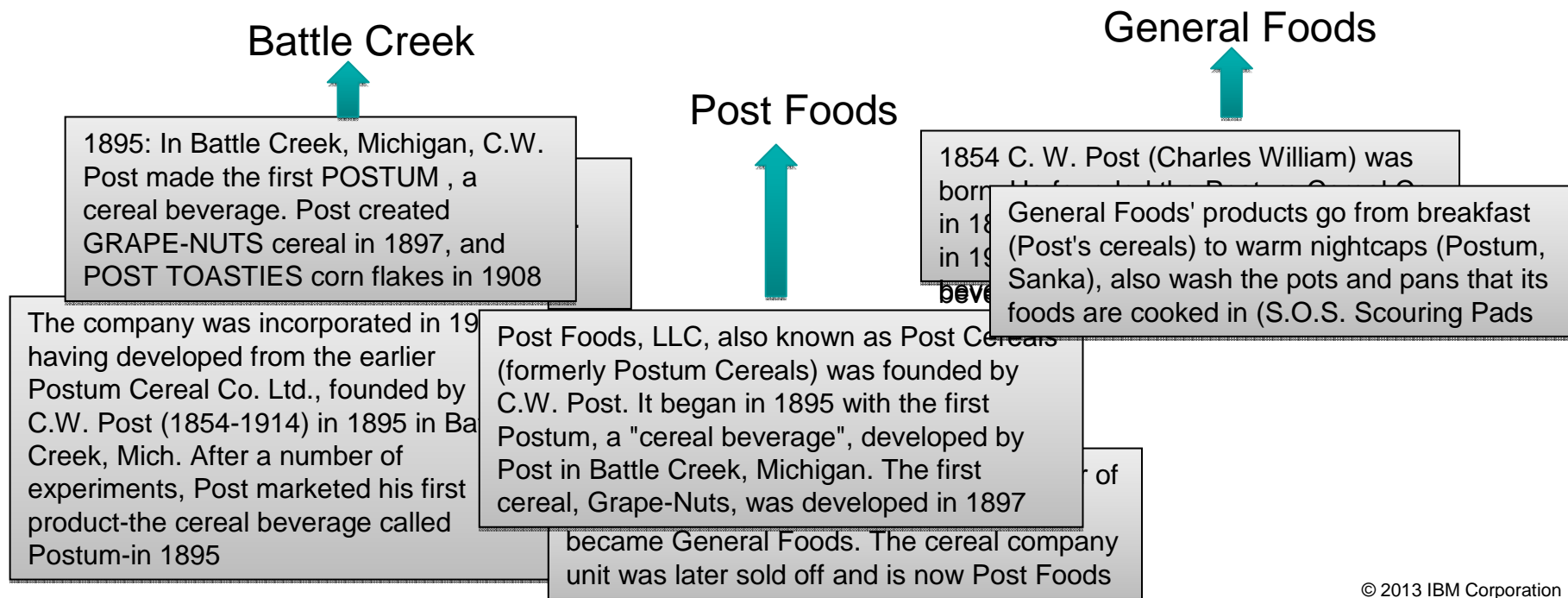
Candidate Answers	Evidence Feature Scores (Answer Scoring + Passage Scoring)								
	Doc Rank	Pass Rank	Ty Cor	Geo					
General Foods	0	1	0.1	0					
Post Foods	2	1	0.1	0					
Battle Creek	1	2	0.8	1					
Will Keith Kellogg	3		0.1	0					
Grand Rapids			0.9	1					
1895		0	0.0	0					

# Step 4B: Hypothesis Scoring (Passage Scoring Features)

**Category: MICHIGAN MANIA**

**Clue: In 1894 C.W. Post created his warm cereal drink Postum in this Michigan city**

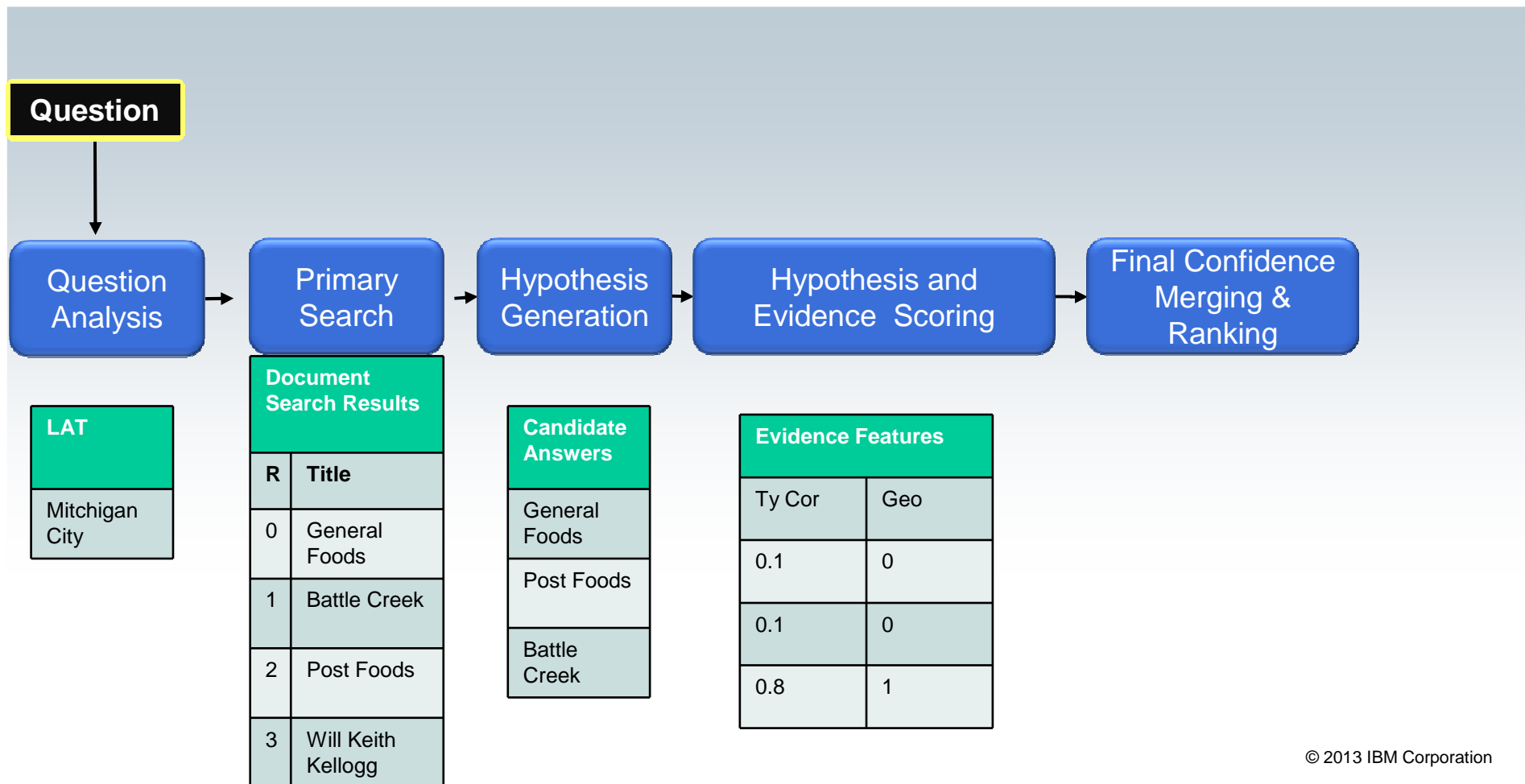
In Deep Evidence Scoring, Watson retrieves evidence for each candidate answer, then evaluates the evidence using a large number of deep evidence scoring analytics. The evidence for a candidate answer may come from the original document or passage where the candidate answer was generated, or it may come from an evidence retrieval search performed by taking the keyword search query from Step 2, replacing the focus terms with the candidate answer, and retrieving the relevant passages that are found. The passages, or "context" in which the candidate answer occurs are evaluated as evidence to support or refute the candidate answer as the correct answer for the question.



*“Minimal” Deep QA Pipeline*

**Category: MICHIGAN MANIA**

**Clue: In 1894 C.W. Post created his warm cereal drink Postum in this Michigan city**



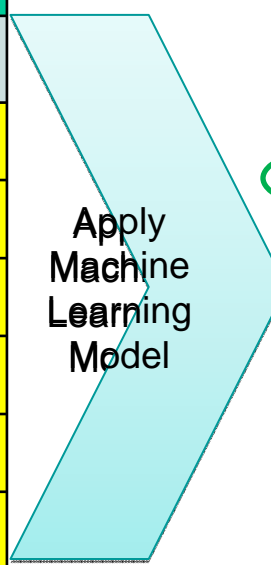
# Step 6: Merging Candidate Answers and Scoring the Confidence

**Category:** MICHIGAN MANIA

**Clue:** In 1894 C.W. Post created his warm cereal drink Postum in this Michigan city

In the final processing step, Watson detects variants of the same answer and merges their feature scores together. Watson then computes the final confidence scores for the candidate answers by applying a series of Machine Learning models that weight all of the feature scores to produce the final confidence scores.

Candidate Answers	Evidence Feature Scores						
	Doc Rank	Pass Rank	Ty Cor	Geo	LFACS	Term Match	Temporal
General Foods	0	1	0.1	0	0.2	22	1
Post Foods	2	1	0.1	0	0.4	41	1
Battle Creek	1	2	0.8	1	0.5	30	0.9
Will Keith Kellogg	3		0.1	0	0	23	0.5
Grand Rapids			0.9	1	0	10	0.5
1895		0	0.0	0	0	21	0.6



Correct Answer 

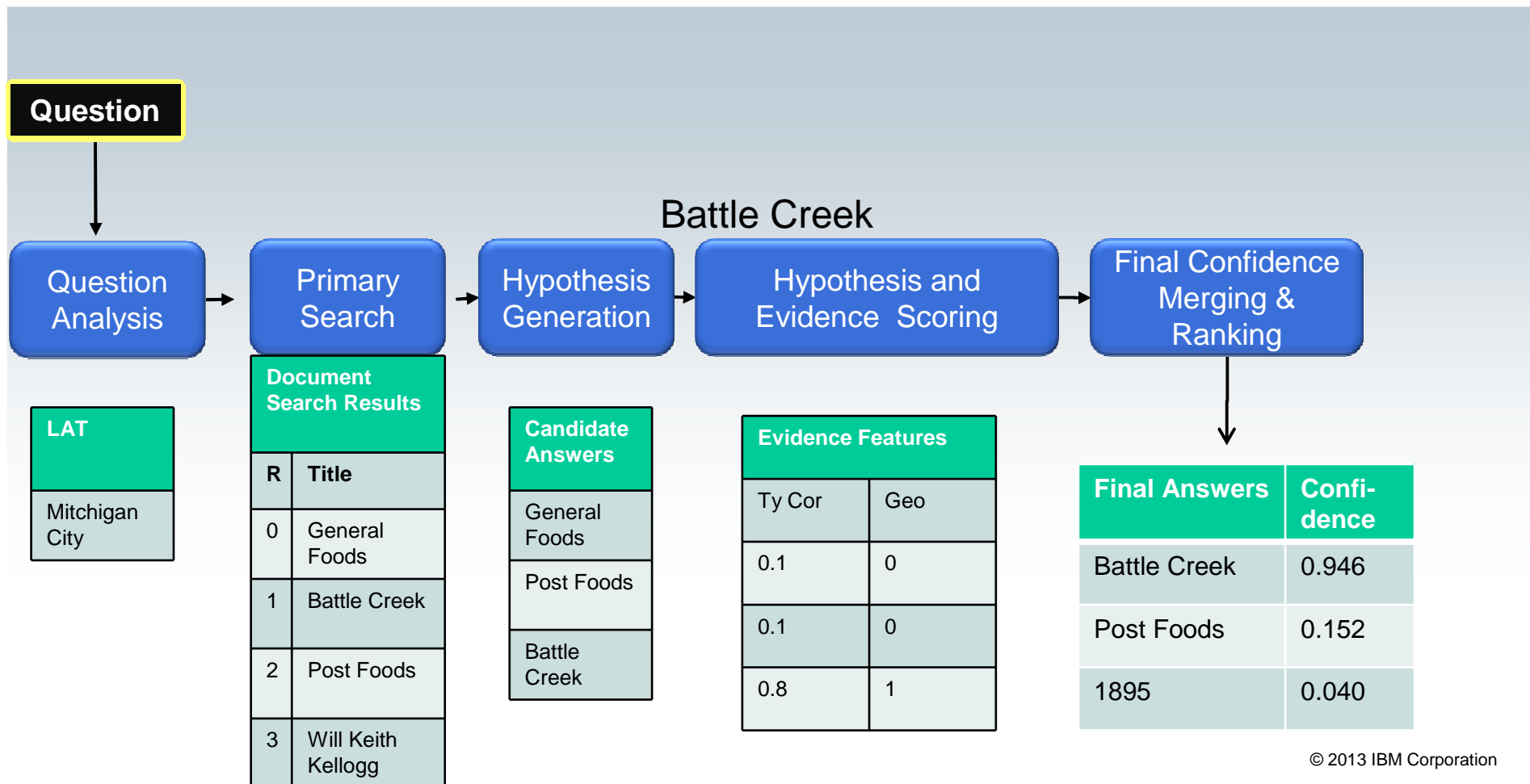
Final Answers	Confidence
Battle Creek	0.946
Post Foods	0.152
1895	0.040
Grand Rapids	0.033
General Foods	0.014



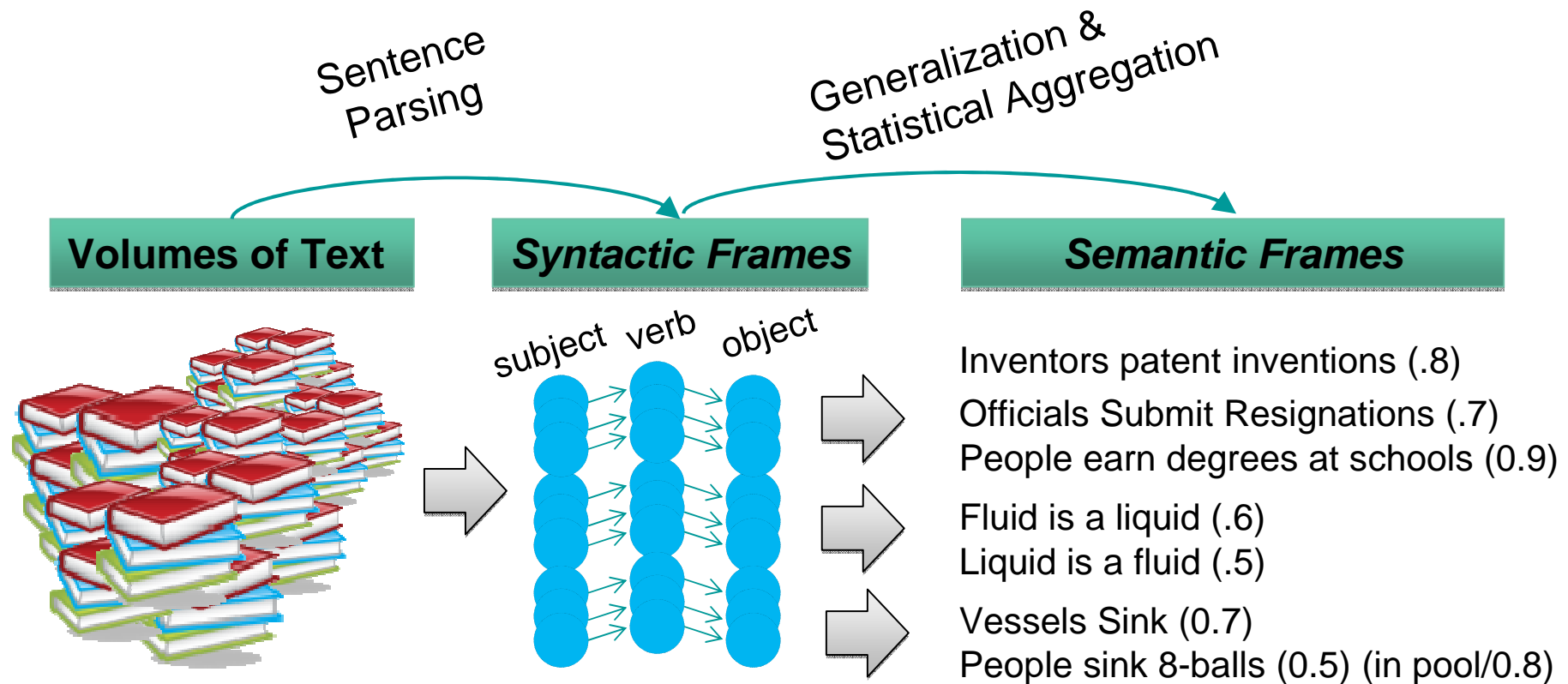
*“Minimal” Deep QA Pipeline*

**Category: MICHIGAN MANIA**

**Clue: In 1894 C.W. Post created his warm cereal drink Postum in this Michigan city**



# Automatic Learning: Watson learns to “read”



---

## Prismatic and Tycor

Semantic Type Disambiguation:

*The Thunder outscored opponents by 8 points per game.*

- Is *Thunder* a TEAM or a SOUND?
  - Hypothesis 1: Thunder is a TEAM
    - Frame: “TEAM outscore opponents” → 1182 occurrences
  - Hypothesis 2: Thunder is a SOUND
    - Frame “SOUND outscore opponents” → 0 occurrences

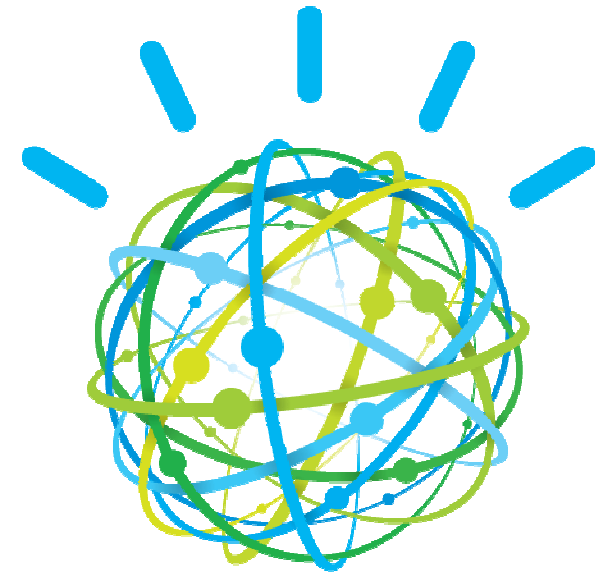
## Prismatic and Tycor

- What are the common relations between PERSON and TEAM, between TEAM and TEAM?

Frequency	Subj Type	Verb	Obj Type
1446	TEAM	play	TEAM
1204	TEAM	beat	TEAM
1115	TEAM	defeat	TEAM
556	TEAM	face	TEAM
196	TEAM	host	TEAM
192	TEAM	sweep	TEAM

Frequency	Subj Type	Verb	Obj Type
5168	PERSON	lead	TEAM
2586	PERSON	coach	TEAM
2367	PERSON	join	TEAM
2260	TEAM	sign	PERSON
2212	TEAM	draft	PERSON
2096	TEAM	trade	PERSON

## Watson in the real world



Healthcare is “dying of thirst in an ocean of data”

“Medicine has become too complex. Only about 20% of the knowledge clinicians use today is evidence-based.”

**Steven Shapiro**

Chief Medical & Scientific Officer  
University Pittsburgh Medical Center

Medical info is doubling every 5 years

81% of physicians spend < 5 hrs / month reading medical journals

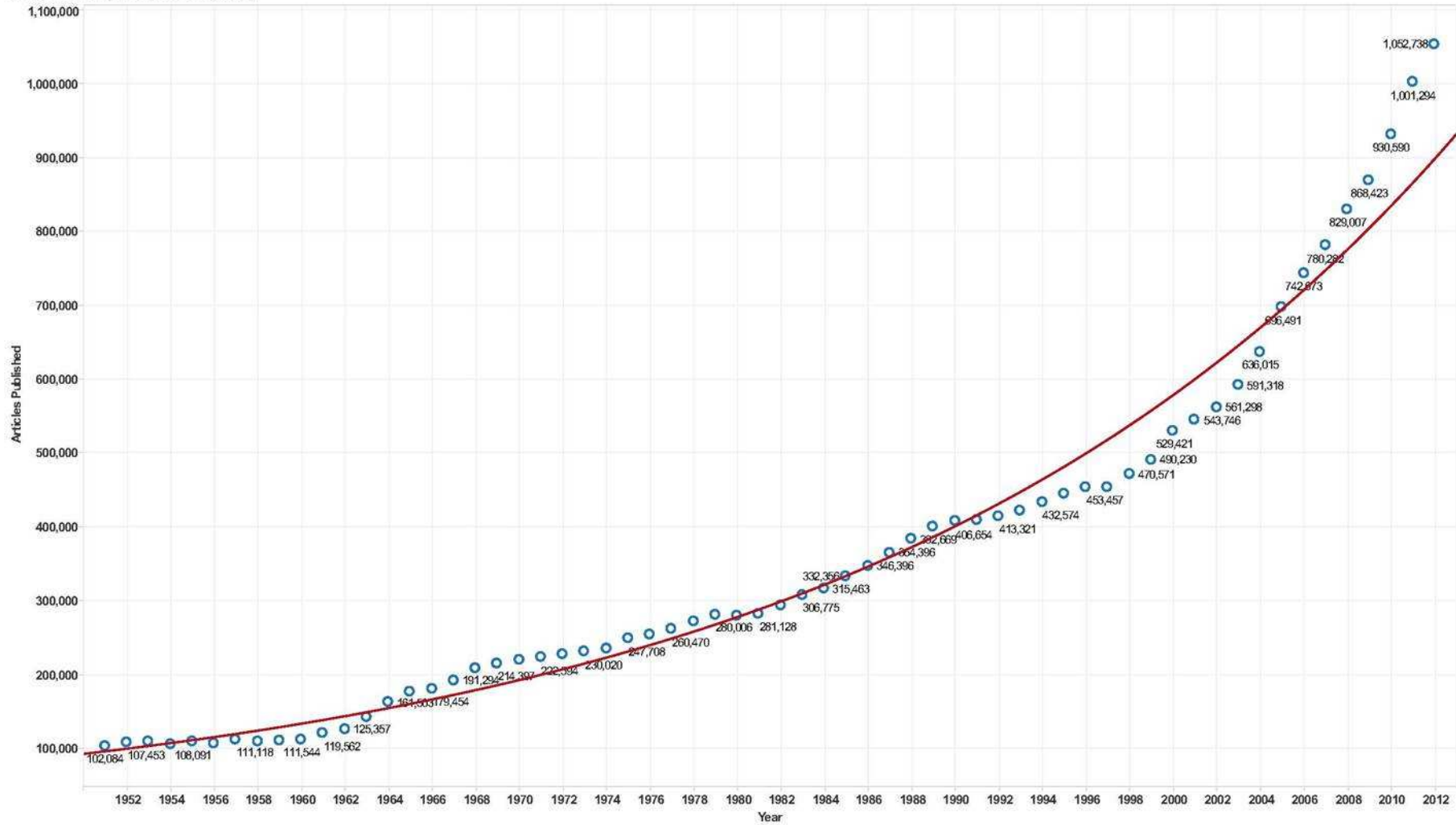
1.5M errors in the way medications are prescribed, delivered and taken

\$750B, or 30 cents of every dollar, is wasted in US alone

# Trend in PubMed Articles



Trend in PubMed Articles Published



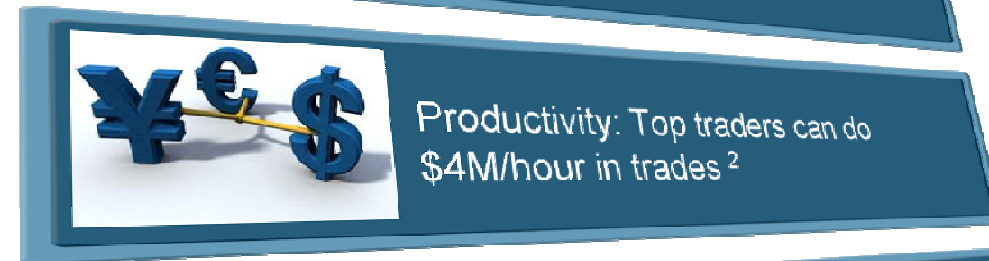
Year vs. Articles Published. The marks are labeled by sum of Articles Published.

## Financial services firms face complex information challenges

Reuters publishes the equivalent of 9000 pages of financial news every day<sup>1</sup>

Five new research documents come out of Wall Street every minute<sup>1</sup>

Asset managers receive up to 1,000 e-mails daily<sup>1</sup>



*“The sheer amount of newsflow has made it difficult for people to take positions confidently”<sup>4</sup>*  
-Adam Margolis, Citi trader



## Beyond Jeopardy!: A new set of Challenges...

### Watson at Play

### Watson at Work

1 User	➔	10s of thousands concurrent users
Max. input was two sentences	➔	Pages of input (e.g. medical record)
Input perfect prose	➔	Noisy text with errors and shorthand
5+ days to retrain	➔	Dynamic content ingestion
Evidence not present	➔	Supporting evidence integral
Text-only input	➔	Text, tables and images as input
Q&A model	➔	Both Q&A + Conversation model
Basic security	➔	High security (e.g. HIPAA)

# Beyond Jeopardy!



## Hardware and Performance Details

(Then...)



**2880 Processing Cores**



**90 IBM P750 Servers**



**16 Terabytes Memory (RAM)**



**20 Questions / min**



(And Now...)

**64 Processing Cores**



**1 IBM P750 Server**



**512 GB Memory (RAM)**



**50 Questions / min**



**NLP x10 faster  
using x50 less RAM**

## What kind of Data?

- **Real world knowledge**
  - Deeply encoded
  - Unstructured data
  
- **Many forms of Unstructured Data**
  - Well formed grade level prose
  - Semi/ Explicitly structured
  - Ambiguous
  - Ungrammatical
  - Domain specific language
  - Scanned hand-written notes (OCR)
  
- **Required technology often exists!**
  - Not integrated well
  - Not scalable, or evolved

	BMD	T-score	Z-score
LWK (L1-L4)	: 0.69 g/cm2	-3.2 (66%)	-3.1 (67%)
Femurhals links	: 0.75 g/cm2	-0.9 (88%)	-0.9 (88%)

```

<Claim>
<ClaimNumber>1</ClaimNumber>
<AccidentDate>30/05/2004</AccidentDate>
<ReportDate>06/06/2004</ReportDate>
<CloseDate>19/01/2005</CloseDate>
<ClaimHistory><CreateDTM>07/06/2004</CreateDTM>
<NoteSubject>016</NoteSubject>
<NoteID>3620034694854</NoteID>
<NoteText>"ICP 1 Assist (Saddlebrook/Christina Shamas) Clt
known with known injures....clt has 30 stitches in his nose.
Discussed claim with T/M Rita Ryan
Assigned task to Maureen Nugent to investigate
  
```

**Tamoxisen** is an **etcelleut** treatment for **bneast** cancer.

in patients over **GO** years of **aye**.

search team led by  
containing the

01232 456 7123

291271

25 Cleveland Drive, Fareham 4235671

Peterlee 2741567

Further items discovered during the raid were 3 forged driving licenses with the following names and numbers:

John Smith 2234 1212 1211VT

Brian Smythe 5643 7382 9234ZX

John Guest 2763 9012 6572AB



### Case Information



The IBM Watson case information does not obviate the need to review the EMR record in detail



#### PATIENT

**Lin J. Yamato**

Patient ID: 000-0000

Provider ID: 00-0000-0

#### DEMOGRAPHICS

Gender: Female

DOB: Jan 15, 1975 (37)

Place of Birth: Osaka, Japan

#### CURRENT CONDITION

**DX:** Lung Adenocarcinoma

**Smoking History:** Never smoker

### Key Points

**2/16/12** – Pathology report from CT biopsy of right adrenal gland: Metastatic adenocarcinoma; morphologically consistent with specimen 312-647



EMR



EVIDENCE

**2/07/12** – CT chest/abdomen/pelvis with contrast: 1.7 cm lesion right adrenal gland suspicious for a metastatic deposit



EMR



EVIDENCE

**2/05/12** – CT chest without contrast: 3.1 cm lesion right upper lobe of lung suspicious for neoplasm



EMR



EVIDENCE

**2/03/12** – PCP visit note: dry cough - labored breathing



EMR



EVIDENCE

### Information Needed

Has the patient experienced any hemoptysis?



EMR



EVIDENCE

Does the patient have normal hearing?



EMR



EVIDENCE





### Test Options to Consider



## WATSON:

Test options are identified based on information available.

Request Pre-auth

#### Type of Disease Evaluation



Molecular pathology panel



EVIDENCE

#### Extent of Disease Evaluation



MRI of the brain



EVIDENCE

#### Pre-treatment Assessment



Baseline EKG



EVIDENCE



Hepatitis B test



EVIDENCE



Pregnancy test



EVIDENCE





### Treatment Options to Consider



#### WATSON:

Treatment options are listed based on the information available.

Request Pre-auth

Treatment Plan	Confidence	Patient Preferences Match	
<input checked="" type="radio"/> <p><b>Treatment plan 1</b> Systemic Chemo: Cisplatin, Pemetrexed, Bevacizumab</p>	<p>95%</p>	<p>Acceptable match with patient preferences</p>	 EVIDENCE
<input type="radio"/> <p><b>Treatment plan 2</b> Systemic Chemo: Carboplatin, Paclitaxel, Bevacizumab</p>	<p>45%</p>	<p>Unacceptable match with patient preferences</p>	 EVIDENCE
<input type="radio"/> <p><b>Treatment plan 3</b> Systemic Chemo: Erlotinib</p>	<p>8%</p>	<p>Preferred match with patient preferences</p>	 EVIDENCE
<p>Radiation and Surgery are unlikely to be appropriate.</p>			 EVIDENCE







### Treatment Options to Consider



#### Treatment plan 1

## WATSON

Treatment options are listed based on information available

Request Prescription

#### Supporting Evidence

Stage IV disease requires systemic therapy. Since the tumor harbors EGFR TKI resistant mutation, the recommended treatment is Cisplatin, Pemetrexed, and Bevacizumab.

Surgery: not recommended for this patient due to the presence of metastatic disease.

RT: not recommended for this patient due to the presence of metastatic disease.

Of the medically appropriate regimens, this treatment is least likely to cause alopecia.

#### Usage Statistics:

This treatment plan has been selected 154 times out of 257 similar patient cases.

#### References

**NCCN Guidelines™ Version 3.2011 NSCL-14: Adenocarcinoma, Large Cell, NSCLC NOS: EGFR mutation negative OR unknown**



**Wu et al.** Lung Cancer with Epidermal Growth Factor Receptor Exon 20 Mutations is Associated with Poor Gefitinib Treatment Response. *Clinical Cancer Research*. 2008 14:4877-4882



**Wu et al.** Effectiveness of tyrosine kinase inhibitors on "uncommon" epidermal growth factor receptor mutations of unknown clinical significance in non-small cell lung cancer. *Clinical Cancer Research*. 2011 Jun 1; 17(11): 3812-21.



**Scagliotti et al.** Phase III Randomized Trial Comparing Three Platinum-Based Doublets in Advanced Non-Small-Cell Lung Cancer. *Journal of Clinical Oncology*. 2002 Nov 1;



**Subject:** Functional Endoscopic Sinus Surgery (FESS)

**Guideline #:** CG-SURG-24

**Status:** Revised

**Current Effective Date:** 10/08/2013

**Last Review Date:** 08/08/2013

### Description

This document addresses the use of functional endoscopic sinus surgery (FESS), an endoscopic surgical procedure used to treat various conditions of the nasal sinuses, including but not limited to chronic sinusitis.

Note: Please see the following document for related information:

- [SURG.00089 Balloon Sinus Ostial Dilatation](#)
- [SURG.00096 Surgical Treatment of Migraine Headaches](#)

### Clinical Indications

#### Medically Necessary:

Functional endoscopic sinus surgery (FESS) is considered medically necessary for the treatment of sinusitis, polypsis, or sinus tumor when any one of the following circumstances is present:

- Suspected tumor seen on imaging, physical examination, or endoscopy; or
- Suppurative (pus forming) complications, including but are not limited to:
  - a. Subperiosteal abscess; or
  - b. Brain abscess;or
- Chronic polypsis with symptoms unresponsive to medical therapy; or
- Allergic fungal sinusitis as indicated by all of the following
  - a. Nasal polypsis; and
  - b. Positive CT findings; and
  - c. Eosinophilic mucus;or
- Mucocele causing chronic sinusitis; or
- Recurrent sinusitis that triggers or aggravates pulmonary disease, such as asthma or cystic fibrosis; or
- Uncomplicated sinusitis (i.e., sinusitis confined to the paranasal sinuses without adjacent involvement of neurologic, soft tissue, or bony structures) and all (a, b, and c) of the following
  - a. Either of the following:
    - four or more documented episodes of acute rhinosinusitis (i.e., less than 4 weeks duration) in one year, or
    - chronic sinusitis (i.e., greater than 12 weeks duration) that interferes with lifestyle;AND
  - b. Maximal medical therapy has been attempted, as indicated by all of the following:
    - Antibiotic therapy for at least 4 weeks; and



- **Watson as virtual agent (Customer service/advice, sales, support...)**

- Insurance
- Telecommunications
- Banking sector



- **Generic mass market offering**

- Take company data e.g. product manuals, help notes, research docs...etc
- Answer questions over this content
- Direct conversation with company's clients
  - or as a 3<sup>rd</sup> party to conversation between human agent
- Improves client experience and satisfaction

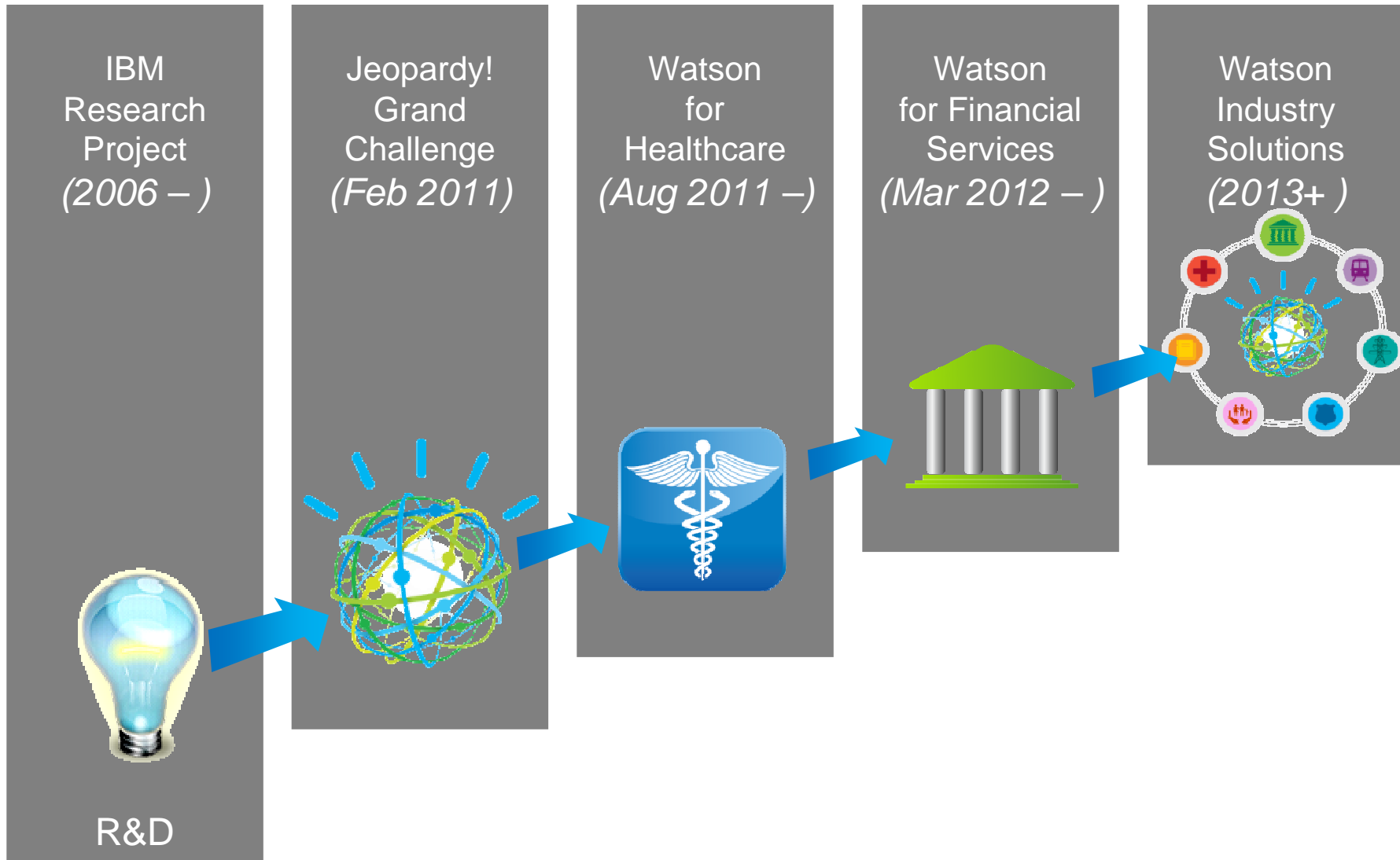
- **Questions...?**

- “How much **stuff** is in a **typical dorm room**?”
- “When will **I** be able to **retire**?”
- “Which **bank account/ data plan** should **I** use?”
- “How much will it cost to send **my daughter** to **school**?”

- **Interactive Q&A with Watson**

- Responds with weighted confidence
- Full data transparency
- Active dialog in natural language
- Leverages multiple data sources
- Systematically learns from user responses, new data, and outcomes

## A Brief History of Watson

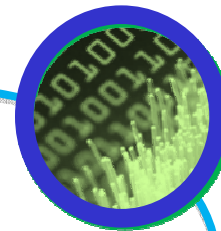


IBM Watson brings together **transformational technologies**

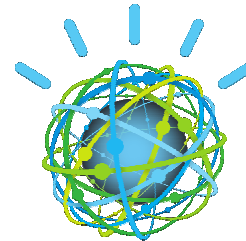
**1** Understands  
natural language  
and human  
communication



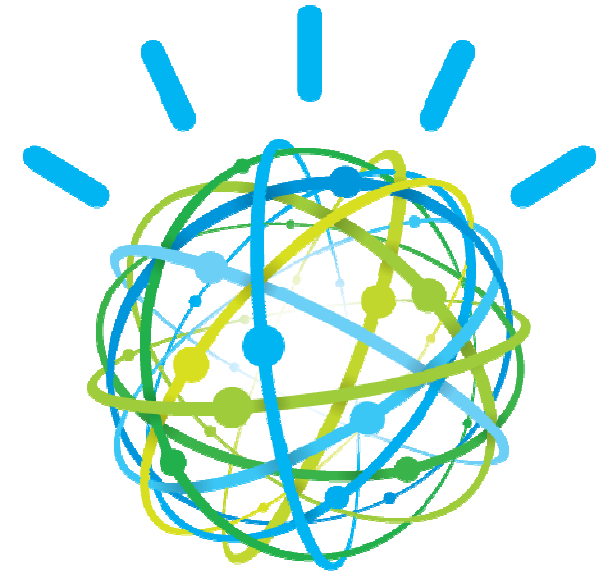
**2** Generates and  
evaluates  
evidence-based  
hypothesis



**3** Adapts and learns  
from user  
selections and  
responses



*...built on a massively parallel  
architecture optimized for IBM POWER7*



Join me on:

***About.me***

<http://about.me/djmccloskey>

***Twitter:***

<http://twitter.com/djmcccl>

Learn more at:



[www.ibmwatson.com](http://www.ibmwatson.com)



[www.facebook.com/ibmwatson](http://www.facebook.com/ibmwatson)



[www.twitter.com/ibmwatson](http://www.twitter.com/ibmwatson)  
(Tweet #ibmwatson )



[www.youtube.com/ibm](http://www.youtube.com/ibm)